

UWS™

Universal Wireless Solution

Wireless Base Transceiver Station Plus Dual Mode Phone



Key Advantages

- Truly universal to any PBX
- Fully behind PBX, no regulatory (VoIP) issues
- Plug & Play, user installable
- An extremely cost-effective way to add mobility features to existing PBX, no need to change installed equipment at all.
- Powerful features, leveraging fully the portability nature of IP phones :
 - With fixed IP address at the WBTS™, the DMP can be registered at WBTS™, anywhere there is Wi-Fi and Internet access
 - The DMP can access the PBX, via WBTS™, as a regular extension, anywhere in the world that Wi-Fi and internet access is available.
 - The DMP can be reached via the PBX and WBTS™, anywhere that Wi-Fi and internet access is available.

Tecom Universal Wireless Solution (UWS™) is a total solution for installed or new PBS/KTS to provide the important mobility functions for users at office premises or traveling abroad. The UWS™ contains two members: Wireless Base Transceiver Station (WBTS™) and Dual Mode Phone (DMP). WBTS™ is a wireless station installed behind the line port of existed PBS/KTS to provide data and voice services; DMP is a Feature-rich GSM Handset with Wi-Fi and VoIP capability. With UWS™, users can easily receive/access calls from/to PBS/KTS while he/she is away from the desk or anywhere of the world wherever the Wi-Fi access is available.

UWS™ is a new services offering to the business users. It is an add-on unit that provides mobile functions on the installed base, it generates significant profits from the existed enterprise sectors.



UWS™ Universal Wireless Solution

Wireless Base Transceiver Station Plus Dual Mode Phone

Specifications for WBTS

Voice Features

- Auto Attendant and Greeting Message
- Call Routing
- Caller ID
- SIP Proxy
- SIP Trunk
- Numbering Plan
- Polarity Reversal (PR) Detection
- Trunk Group

VoIP Features

- SIP v2 (RFC3261)
- G.711, G.729A, and G.723.1 (optional)
- G.168 Line Echo Cancellation
- 2100 Hz Fax/Modem Tone Detection
- DTMF Detection
- Adaptive Jitter Buffer
- Voice Activity Detection (VAD)
- Comfort Noise Generation (CNG)
- DTMF Relay (RFC2833)
- Call Progress Tone Generation / Detection

Network Features

- TCP/IP Protocols
- DHCP/Server Client
- Dynamic IP/Static IP/PPPoE
- NAT
- Routing
- Virtual Server
- IP QoS (802.1p, Priority Queue based on ToS tag)
- DDNS
- Security
- Configuration Management
- Remote Diagnostic

Security

- Firewall
- Packet Filtering
- Access Control List

Wireless Security:

- Support WEP (64, 128-bit) encryption
- 802.1x and WPA/WAP2 authentication
- MAC Address-based access control
- WDS support

Remote Configuration and Diagnostic

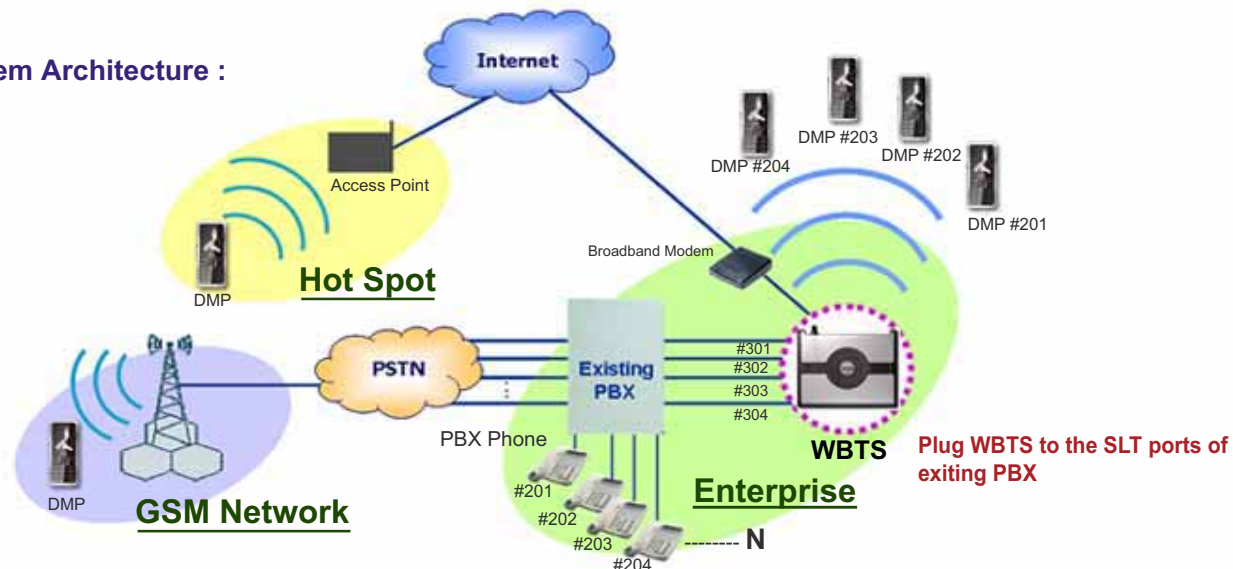
System Features

- 1 x 10/100 BaseT WAN Port
- 4 x FXO Ports
- 3 x 10/100 BaseT LAN Port
- 802.11 b/g Wi-Fi Access Point

Dimension

- 223(W) x 159(L) x 35(D) (mm)

System Architecture :





UWS™

Universal Wireless Solution

Wireless Base Transceiver Station Plus Dual Mode Phone

Specifications for DMP

Network

GSM :

- Triple-Band (GSM 900, DCS 1800, PCS 1900)
- 850/1900 bands should be available as an option

Wi-Fi :

- 802.11b/g

Speech Codec :

- GSM: HR/FR/EFR/AMR
- VOIP: G..711a/u, G.726 24, 32 kbps, G.723.1, G.729

Entertainment :

- MP3 Format : MP3, AAC, AAC+, Enhance AAC+
- Melody : 25 melody in total
- Phonebook, Pictures, Ringtones, Calendar, Game...

H/W Basic

- Talk time : 240 mins (GSM Mode)
160 mins (WiFi Mode)
- Standby time : 180 Hrs (GSM Mode) ;
150 Hrs (WiFi mode)
- Cell Capacity : 1000mAh
- Antenna : Embedded antenna
- SAR : <1.0 W/Kg
- Memory : 128Mb NorFlash
+ 64Mb PSRAM + 64MB Nand
- Vibrator : Build-in Vibrator
- Polyphonic Ringer : 64 polyphonic ring

Camera :

- Resolution : 1280*1024
- Type : CMOS, 1.3M FF
- Low lux : Yes

Physical Spec

- Housing Type : Bar
- Dimension : 105*45*15mm
- Weight : <90g

Display :

- Main LCD : 1.8" 262K TFT
- Resolution : 176*220 pixel
- LCM luminance : 150 cd/m² at least (measure from lens)
- Resolution : 1280*1024
- Type : CMOS, 1.3M FF
- Low lux : Yes